

249 000 €

Buying house

4 rooms

Surface : 76 m²

Surface of the living : 32 m²

Year of construction : 1940

Exposition : Est ouest

View : Citadine

Hot water : Electrique

Inner condition : a refresh

External condition : a refresh

Couverture : tiles

Features :

Double Glazing, air conditioning

2 bedrooms

2 showers

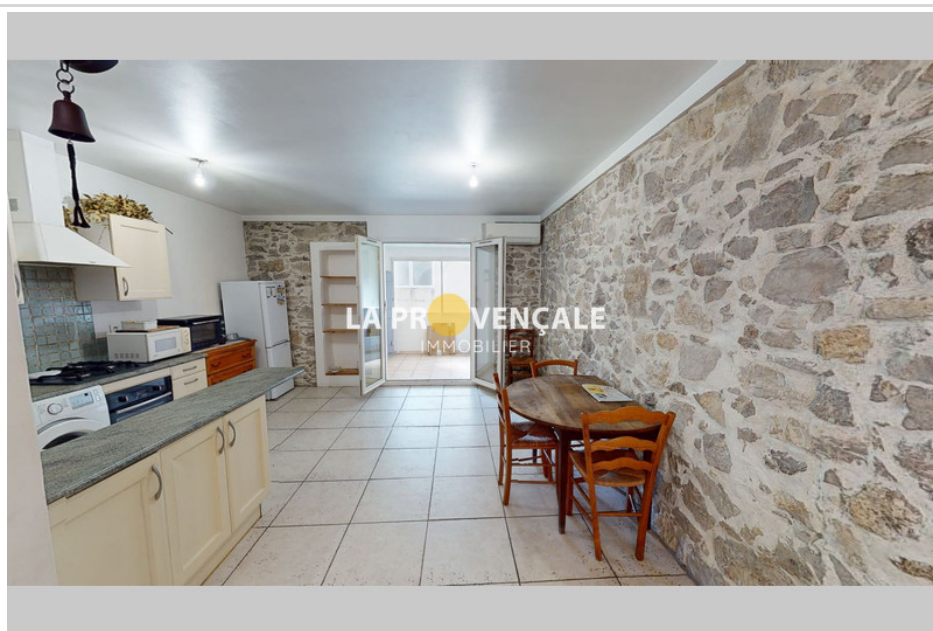
2 WC

1 garage

1 cellar

Energy class (dpe) : C

Emission of greenhouse gases (ges) : A



House 23068 Fuveau

FUVEAU "13710" Exclusively in your agency. If you like the charm of village houses to settle your little family in, I invite you to discover this beautiful double house, located in the heart of the village and close to all amenities (schools, buses, shops), in a quiet area. You will find on the ground floor a large and bright living room with its open kitchen, a bathroom and toilet. Upstairs, 2 beautiful bedrooms with storage, a bathroom and toilet. In the basement a very large garage with laundry area. MDT 23067 Fees charged to sellers. This property is presented to you by Amepe Vallée de l'Arc. "Information on the risks to which this property is exposed is available on the Géorisks website: www.georisks.gouv.fr".

General informations :

249 000 € fees included

Document non contractuel

12/05/2024 - Prix T.T.C

